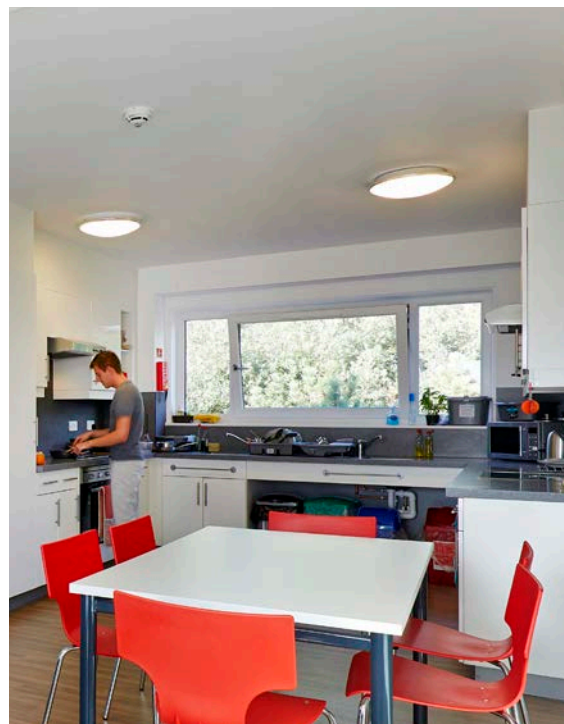


BRIDGES TOWNHOUSE



Things you need to do before you arrive

1. Read your student residence agreement [here](#).
2. Complete your compulsory induction via the accommodation portal.
3. Book your arrival slot.
4. Read the *Halls A-Z handbook*.
5. Visit the [accommodation arrivals webpages](#).

Need to get in touch?

accommodationonline@reading.ac.uk
0118 200 5011
+44 118 200 5011 (international)

.....
[View more images on our flickr here](#)

[Find local area information here](#)

KEY FACTS

BRIDGES TOWNHOUSE

Hall address

Your name, flat, block
Bridges Hall
Whiteknights Road
Reading, RG6 6BG

Bridges Hall is part of Redlands Group.

Reception

Reception can be found at Bridges Hall.

Post

Postboxes are on the outside wall of Bridges Reception. Collect parcels and registered mail from Bridges Reception between 08:30–09:30 and 14:00–18:30 (term-time).

Lift access

Yes in the Hall. No lift access in the Townhouses.

Social facilities

Bridges Common Room contains a TV screen. Allocated study space is Bridges JCR and Wessex Study Space.

Special requirements

Single-sex areas are available in this hall (based on demand, not guaranteed).

Meal Plan?

The University recommends all first year students enrol onto a Meal Plan. If you haven't already, you can enrol onto a fixed price Meal Plan, ranging from 3 to 21 meals per week, by visiting www.clever-cuisine.com. The closest catering outlet is Park Eat.

Catering outlets

The closest catering outlet is Ice House for drinks and snacks and Eat at the Square for meals.

Your kitchen

Each Kitchen is equipped with a kettle, toaster, ovens and hobs and is shared between twelve residents. Each resident has one kitchen cupboard, and one fridge and freezer shelf.

Do I need induction pans?

No. Bridges Hall has standard electric ovens and hobs. You do not need a particular type of pan. If purchasing a kitchen pack, please select 'standard hob kitchen pack'.

Walking distance

10 minutes to central Whiteknights Campus.

Nearest public transport

Bridges Hall: 2 minutes
Bus: 19b (21 and 21a also available to campus)

Bed size

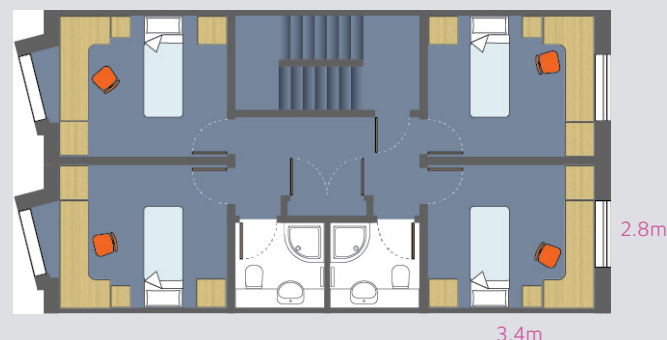
- Townhouse:
long single bed, 3'0"x6'3" (91.5cm x 190.5cm)

Each room contains bed, desk, chair, shelves, curtains, wardrobe and rubbish bin. There is also storage under the bed.

Bedding packs and mattress toppers are available to purchase online or from your local reception.

Bathrooms are unisex and have a toilet, sink, washbasin and shower with an enclosed door and adjustable showerhead. They also have a shaver/toothbrush socket.

Example townhouse floorplan



Not to scale. Room measurements are approximate only. This is not the guaranteed size of your room. Approximate room size = 9.5m².

Need to get in touch?

accommodationonline@reading.ac.uk

0118 200 5011

+44 118 200 5011 (international)

View more images on our flickr [here](#)

Find local area information [here](#)